



...an Elegant City Hideaway

www.YourWillowRidge.com

THE SHENANDOAH



Illustrations and plans are artist's conceptions of typical homes and do not necessarily represent final plans, designs and elevations.

Two-story residence with 4 bedrooms, 2.5 baths and two-car garage.

Approximately 2386 square feet:

1468 First Floor

918 Second Floor

1026 Unfinished basement

562 Garage

This grand, two-story home is the largest of the home plans offered at Willow Ridge. From the foyer with hardwood flooring to the elegant archway and column detail, there are many distinctive living features offered in this luxurious home.

On the main floor, enjoy a convenient, yet private, first floor master retreat complete with two closets, dual vanity, a soaking tub with tile surround and a separate shower compartment. An expansive great room featuring lofty ceilings and a gas fireplace adjoin the formal dining room and spacious eat-in kitchen, making entertaining in this home a breeze.

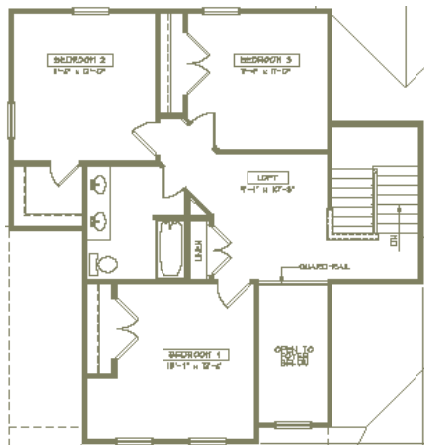
Three additional bedrooms and a full bath are tucked away on the second floor, and a sunlit loft offers endless possibilities, including a library, nook or home office.

Exterior Craftsmanship

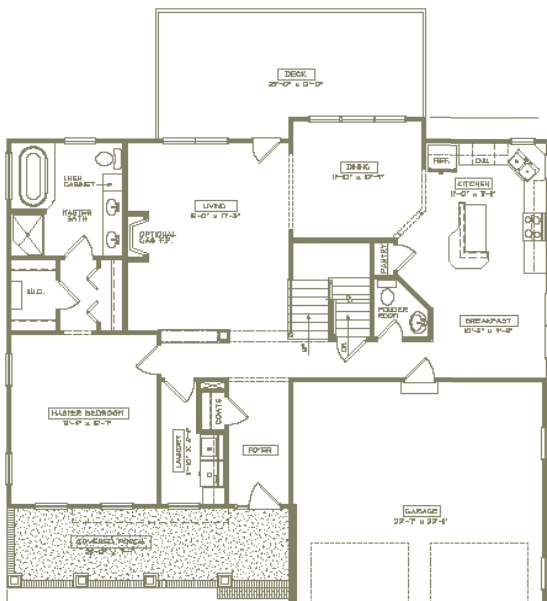
- 30-year dimensional shingles with metal accents
- Low-maintenance vinyl siding and trim boards
- Textured, fiberglass, 6-panel front door with light transom and decorative entry handle set and deadbolt in gunmetal finish
- Cultured stone or brick accents on front elevation
- Covered front porch with decorative columns and rails
- Beautifully landscaped and seeded yards tailored to suit each private lot setting
- Expansive rear deck or patio perfectly suited for entertaining
- Concrete steps and walkways leading to concrete driveway
- Mailboxes, lighted city streets and community sidewalks
- Carriage-style garage doors with decorative hardware and I-drive opener, two remotes and keyless entry
- Recessed front porch lighting and lanterns on sides of garage, rear and basement doors

DISTINCTIVE LIVING BY
PHEASANT RUN

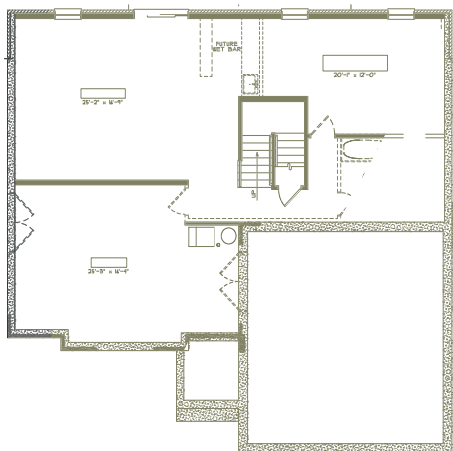




Upper Floor



Main Floor



Basement

Distinctive Living Features

- Gas fireplace with shelf mantel
- Hardwood flooring in foyer, kitchen and powder, formal dining and great rooms
- Entry to great room highlighted with archway and decorative column
- Porcelain tile flooring in laundry room, master bath and secondary baths
- Wall-to-wall carpeting on stairway and in all bedrooms and bedroom closets
- Colonial-style window and door trim
- Molded, arched-top two-panel doors with brushed nickel hardware
- Luxurious master bath with dual vanities, beveled mirrors, linen cabinet, separate shower and oval soaking tub with platform
- Enhanced decorative bath accessories in brushed nickel, including Delta sink, shower and tub fixtures in Brilliance Stainless Steel finish
- Custom lighting package includes recessed lighting in great room, hallway and kitchen; ceiling fans in great room and bedrooms; under cabinet lighting in kitchen and pendant lighting at kitchen island work space
- Neutral paint on walls and ceilings with complimentary color on trim and doors

Interior Design Elements

- Two-story foyer and archway with column
- 9-foot ceilings on first floor and basement
- Spacious kitchen with island workstation, large pantry closet and breakfast nook flowing into formal dining and great room
- Private, main floor master suite with walk-in closet and luxurious bath
- Spacious secondary bedrooms
- Main floor laundry room with washer/dryer connections and shelving
- Walkout basement for future recreation room with optional wet bar, full bath and fifth bedroom
- Under garage storage area accessible from outdoors and indoors, with double doors to accommodate lawn equipment