

THE LEXINGTON



Illustrations and plans are artist's conceptions of typical homes and do not necessarily represent final plans, designs and elevations.

Vaulted one-story villa with 2 or 3 bedrooms*, 2 full baths and one-car garage.

Approximately 1452 finished square feet:
1452 Main Floor
327 Garage

*This is a Willow Ridge Flex-Plan. Several options are available; consult a Willow Ridge team member for details.

Craftsman character best describes the exterior of this cozy, one-story villa. Tapered columns on stone bases, metal accents and low-maintenance shingle, horizontal and vertical vinyl siding are a delightful prelude to what's inside. Here you will find a vaulted beauty perfect for today's busy lifestyle!

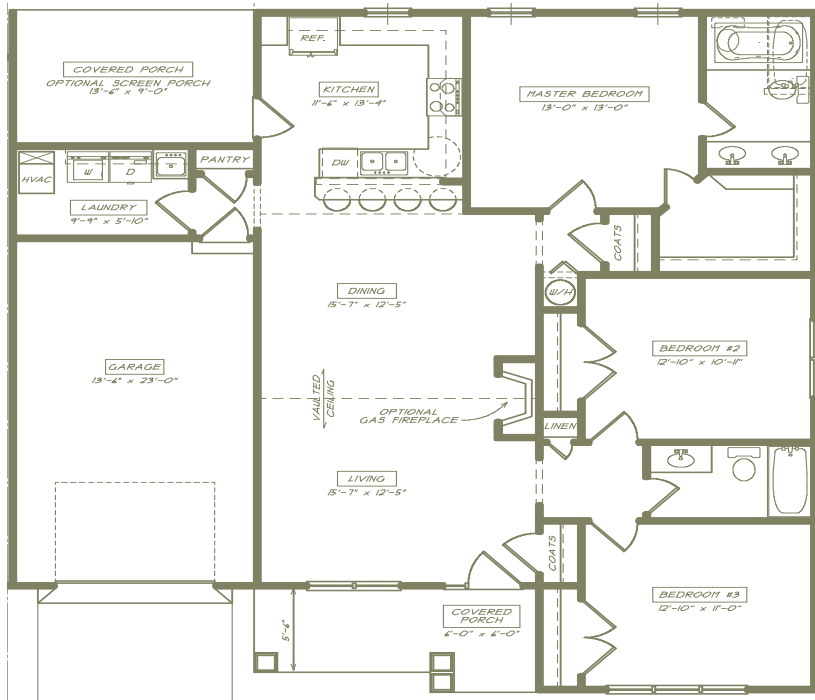
A sidelight and transom highlight the home's front door and provide natural light to the enormous, vaulted great room. Sliding glass doors offer additional light into the kitchen area and provide a warm welcome to the outdoors and the quaint, covered rear porch.

When privacy is a must, slip away to the master retreat. Here you will enjoy a roomy, walk-in closet and tiled full bath complete with two vanities and a decorative octagon shaped window.

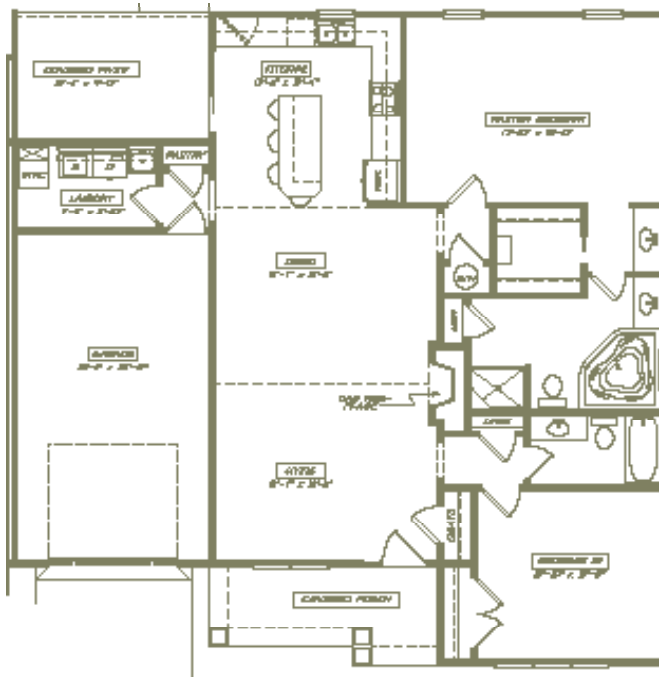
Additional features include pull-down attic storage and a spacious mudroom where washer and dryer hookups are provided.

Exterior Craftsmanship

- 30-year dimensional shingles with metal accents
- Low-maintenance vinyl siding - combinations of vertical, horizontal and shingle siding
- Textured, fiberglass, 6-panel front door with transom and sidelight and decorative entry handle set with deadbolt in gunmetal finish
- Cultured stone or brick accents on front elevation
- Covered front porch with decorative rails and tapered columns
- Beautifully landscaped and seeded yards tailored to suit each private lot setting
- Private, covered front and rear porches
- Concrete steps and walk leading to concrete drive and private off-road parking
- Mailboxes, lighted city streets and community sidewalks
- Exterior lighting - quality lanterns on garage exterior and overhead fixtures on covered porches
- Carriage-style single-car garage door with decorative hardware, I-drive opener, keyless entry and two openers



Main Floor



2-bedroom Flex Plan

Distinctive Living Features

- Hardwood flooring on entire main floor
- Porcelain tile in all baths and laundry room, and porcelain-tiled shower surround in master bath
- Wall-to-wall carpeting on steps, in upstairs hallway and in all bedrooms
- Molded, two-panel doors with elegant arched upper panel and brushed nickel hardware
- Delta sink, shower and tub fixtures in Brilliance Stainless Steel
- Stainless Steel Whirlpool Appliance Package with smooth cook-top range with oven, side-by-side refrigerator and freezer with ice and water dispensers, dishwasher and space-saver microwave
- Ceiling fans in vaulted great room and master bedroom, overhead lighting in all secondary bedrooms
- Cable and phone jacks in all bedrooms and living areas
- Neutral paint tones on walls, complimentary color on doors and trim work, white ceilings

Interior Design Elements

- Vaulted great room and dining room combination
- 9-foot ceilings on entire remaining main floor
- Entry coat closet and two additional hall closets
- Flexible kitchen layouts, with breakfast bar or island open to the great room and large pantry closet
- Direct, main floor access to house from garage
- Pull-down attic stairs to storage area above garage
- Large laundry room adjacent to the kitchen with washer and dryer connections provided
- Private master suite with walk-in closet and full bath featuring dual vanities, tiled tub surround and Octagon window.
*Alternative bath layout available.
- Large secondary bedrooms with spacious closets and shared hall bath

Illustrations and plans are artist's conceptions of typical homes and do not necessarily represent final plans, designs and elevations.