

THE JACKSON



Illustrations and plans are artist's conceptions of typical homes and do not necessarily represent final plans, designs and elevations.

Two-story residence with 4 bedrooms, 2.5 baths, finished bonus room and two-car garage.

Approx 2225 finished square feet:	260 Finished Bonus Room
1026 Main floor	1026 Unfinished basement
939 Second floor	566 Garage

Curb appeal abounds in this marvelous two-story residence! A spectacular covered front porch, decorative columns and rails and a beautifully landscaped yard all enhance the exterior charm of this home.

The first floor combines the elegance of a two-story foyer and formal dining room with the luxury of adjoining kitchen and living areas.

The second story has 4 bedrooms and 2 full baths, while the unfinished basement easily converts into additional living space, making this the perfect home for a growing family.

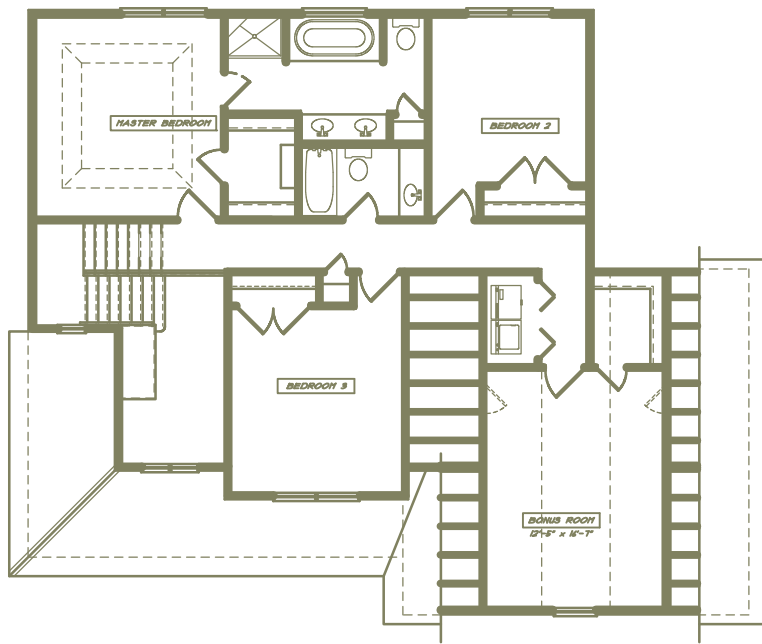
Bonuses include a two-car garage with finished storage space underneath, a private deck and a poured concrete patio.

Exterior Craftsmanship

- 30 year dimensional shingles
- Low maintenance vinyl siding
- Textured, fiberglass, 6-panel front door with decorative entry handle set and deadbolt in gunmetal finish
- Cultured stone or brick accents on front elevation
- Covered front porch with decorative columns and rails
- Beautifully landscaped and seeded yards tailored to suit each private lot setting
- Expansive rear deck or patio perfectly suited for entertaining
- Concrete steps and walkways leading to concrete driveway
- Mailboxes, lighted city streets and community sidewalks
- Recessed lighting front porch; lanterns on sides of garage door and rear door lanterns on basement rear door and first floor rear door

DISTINCTIVE LIVING BY
PHEASANT RUN

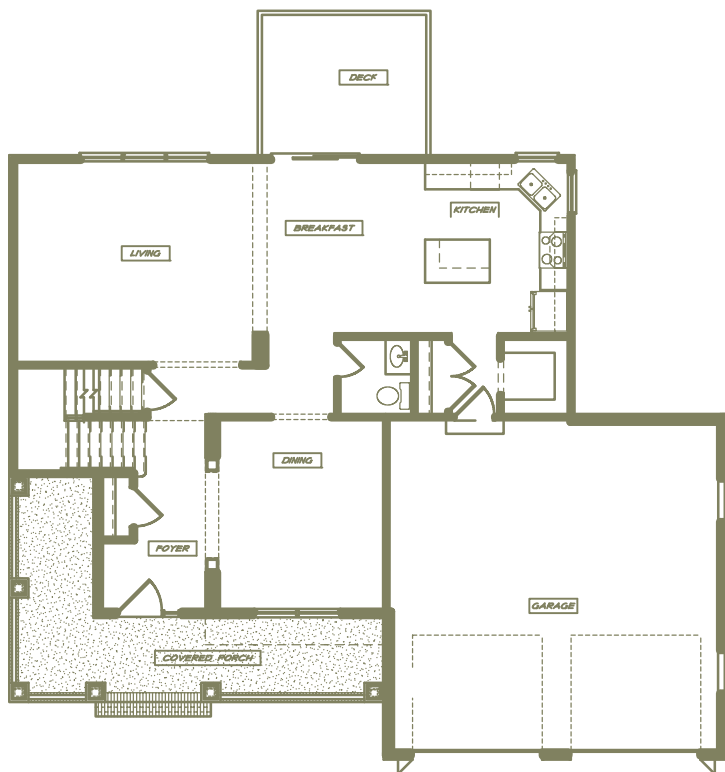




Upper Floor

Distinctive Living Features

- Gas fireplace with mantel
- Hardwood flooring in entry, great room powder room, formal dining room and kitchen
- Entry to formal dining room highlighted with archway and decorative columns
- Porcelain tile flooring in laundry room, master bath and secondary baths
- Upgraded trim package includes crown and chair molding in formal dining room
- Molded, two panel doors with elegant arched top panel and brushed nickel hardware
- Enhanced decorative bath accessories in brushed nickel to include Delta sink, shower and tub fixtures in Brilliance Stainless finish
- Luxurious master bath with cultured marble double vanity top, beveled mirrors, separate shower and oval soaking tub with tile surround
- Recessed lighting in formal dining room, great room and kitchen
- Front porch recessed lighting, lanterns on side of both garage doors and lanterns on rear and basement doors light the exterior



Main Floor

Interior Design Elements

- Two-story foyer
- 9-foot ceilings on first floor and basement
- Formal dining room
- Spacious kitchen with island workstation, breakfast nook and huge pantry closet
- Spacious secondary bedrooms
- Expansive great room that flows into the kitchen and dining areas
- Master suite with tray ceiling, walk-in-closet and luxurious bath
- Spacious secondary bedrooms
- Convenient upstairs laundry closet with washer/dryer connections and shelving
- Finished bonus room with huge walk-in-closet perfect for fourth bedroom, children's retreat, home office, study or guest room
- Unfinished, walkout basement with future recreation room, full bath and fifth bedroom available
- Under garage storage area, accessible from outdoors and indoors with oversized doors to accommodate lawn equipment.